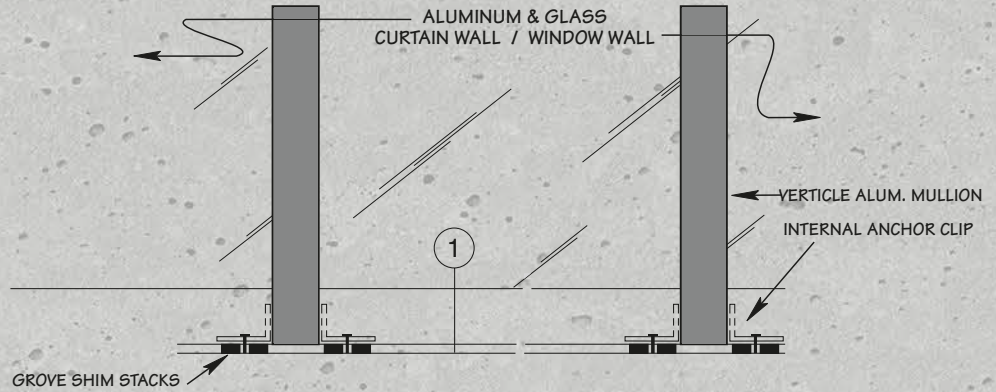
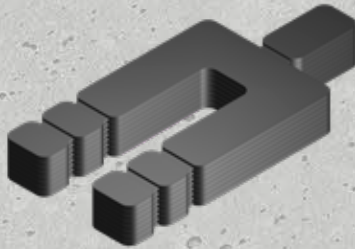




GROVE SHIMS™

RUGGED, INEXPENSIVE, AND CONVENIENT LEVELING AND ALIGNMENT AIDS FOR THE GLASS AND CONSTRUCTION INDUSTRY

SHIM STACKS



Item	Thickness	Size	Bolt Hole	Color	Pack
Mini Stack	1/32"	1-7/8" x 3-1/8"	5/8"	Green	2M/cs (250-8Pack)
Short Stack	1/16"	1-7/8" x 3-1/8"	5/8"	Black	2M/cs (250-8Pack)
Reg. Stack	1/16"	1-7/8" x 3-5/8"	5/8"	Black	2M/cs (125-16Pack)
XL Stack	1/16"	1-7/8" x 4-1/8"	5/8"	Black	2M/cs (125-16Pack)
Giant Stack	1/16"	1-7/8" x 5-1/8"	5/8"	Black	2M/cs (125-16Pack)

M= 1000

**FIRE RESISTANT
SHIMS AVAILABLE**



4" X 6" SHIMS

Thickness	Size	Color	Pack
1/16"	1/16" x 4" x 6" w/3/4" Slot / Scored at 5" Length	Blue	1000/cs
1/8"	1/8" x 4" x 6" w/3/4" Slot / Scored at 5" Length	Red	500/cs
1/4"	1/4" x 4" x 6" w/3/4" Slot / Scored at 5" Length	Black	250/cs
3/8"	3/8" x 4" x 6" w/3/4" Slot	White	150/cs
1/2"	1/2" x 4" x 6" w/3/4" Slot	Brown	120/cs



GROVE SHIMS™

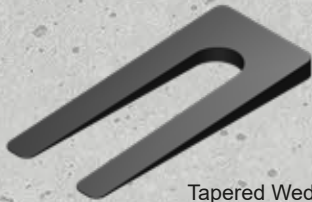
RUGGED, INEXPENSIVE, AND CONVENIENT LEVELING AND ALIGNMENT AIDS FOR THE GLASS AND CONSTRUCTION INDUSTRY



U-Shims



Tapered Snap-Apart Wedge



Tapered Wedge



Key Slot



Horseshoe



U-Shim

Thickness	Size	Bolt Hole	Color	Pack
1/16"	1-1/2" x 2"	1/2"	Blue	1M/cs
1/8"	1-1/2" x 2"	1/2"	Red	1M/cs
3/16"	1-1/2" x 2"	1/2"	Orange	500/cs
1/4"	1-1/2" x 2"	1/2"	Black	1M/cs
3/8"	1-1/2" x 2"	1/2"	White	1M/cs
1/2"	1-1/2" x 2"	1/2"	Brown	500/cs

1/32"	1-1/2" x 3-1/2"	1/2"	Green	1M/cs
1/16"	1-1/2" x 3-1/2"	1/2"	Blue	1M/cs
1/8"	1-1/2" x 3-1/2"	1/2"	Red	1M/cs
3/16"	1-1/2" x 3-1/2"	1/2"	Orange	1M/cs
1/4"	1-1/2" x 3-1/2"	1/2"	Black	1M/cs
3/8"	1-1/2" x 3-1/2"	1/2"	White	500/cs
1/2"	1-1/2" x 3-1/2"	1/2"	Brown	500/cs

1/16"	1-7/8" x 2-5/8"	5/8"	Blue	1M/cs
1/8"	1-7/8" x 2-5/8"	5/8"	Red	1M/cs
1/4"	1-7/8" x 2-5/8"	5/8"	Black	1M/cs

1/16"	2-5/16" x 3"	13/16"	Blue	1M/cs
1/8"	2-5/16" x 3"	13/16"	Red	1M/cs
1/4"	2-5/16" x 3"	13/16"	Black	1M/cs
3/8"	2-5/16" x 3"	13/16"	White	500/cs

Item	Thickness	Size	Bolt Hole	Color	Pack
Tapered Wedge	1/32" x 1/4"	1-1/2" x 3-3/8"	1/2"	Black	1M/cs
Lg. Tapered Wedge	1/32" x 3/8"	1-1/2" x 6"	1/2"	Gray	600/cs
8" Solid Wedge	1/16" x 1/4"	1-1/2" x 8"	N/A	Black	1M/cs
TW-24	3/4"-5/16"	2" x 4"	N/A	Gray	350/cs
Snap-Apart Wedge	1/4" x 1/16"	1-1/2" x 3-1/4"	1/2"	White	1M/cs

Item	Thickness	Size	Bolt Hole	Color	Pack
Key Slot	1/16"	3" x 3-1/2"	7/16"	Blue	1M/cs
	1/8"	3" x 3-1/2"	7/16"	Red	1M/cs
	1/4"	3" x 3-1/2"	7/16"	Black	500/cs
U	1/32"	3" x 4"	7/8"	Green	1M/cs
	1/16"	3" x 4"	7/8"	Blue	1M/cs
	1/8"	3" x 4"	7/8"	Red	1M/cs
	3/16"	3" x 4"	7/8"	Orange	1M/cs
	1/4" (Solid)	3" x 4"	7/8"	Black	500/cs
	3/8"	3" x 4"	7/8"	White	360/cs
	1/2"	3" x 4"	7/8"	Brown	250/cs
	5/8"	3" x 4"	7/8"	Grape	225/cs
	3/4"	3" x 4"	7/8"	Cyan	200/cs

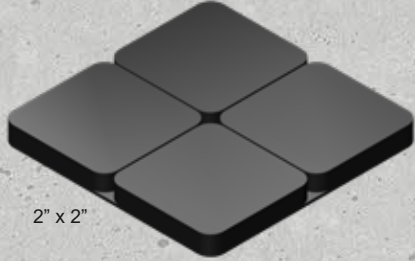
M = 1,000

Typically withstanding ten tons of compressed force, light weight "U" shaped Grove Shims™ are offered in eight sizes (1-1/2" x 2", 1-1/2" x 3-1/2", 1-7/8" x 2-5/8", 2-5/16" x 3", Wedge, 3" x 3-1/2", Key Slot and 3" x 4") and up to nine thicknesses (1/32" green, 1/16" blue, 1/8" red, 3/16" orange, 1/4" black, 3/8" white, 1/2" brown, 5/8" grape, and 3/4" cyan), supplied bulk packed in boxes. Independent laboratory testing reports are available on our web site.

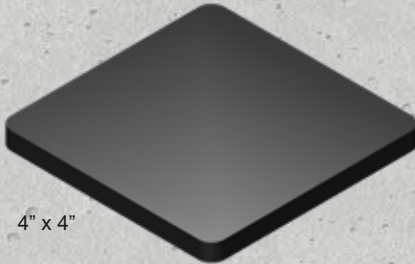


GROVE SHIMS™

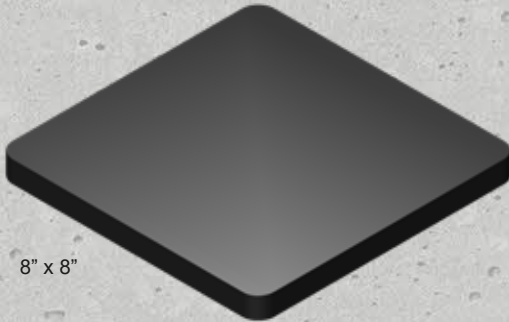
RUGGED, INEXPENSIVE, AND CONVENIENT LEVELING AND ALIGNMENT AIDS FOR THE GLASS AND CONSTRUCTION INDUSTRY



2" x 2"



4" x 4"



8" x 8"



10" x 10" - 1/2" Scored

2" x 2"

Thickness	Pack
1/16"	2400/cs
1/8"	2400/cs
1/4"	1600/cs
3/8"	1000/cs
1/2"	800/cs

2" x 4"

Thickness	Pack
1/16"	1200/cs
1/8"	1200/cs
1/4"	720/cs
3/8"	500/cs
1/2"	400/cs

3" x 3"

Thickness	Pack
1/16"	2000/cs
1/8"	1400/cs
1/4"	700/cs
3/8"	250/cs
1/2"	370/cs

3" x 4"

Thickness	Pack
1/16"	1000/cs
1/8"	1000/cs
1/4"	500/cs
3/8"	360/cs
1/2"	250/cs

4" x 4"

Thickness	Pack
1/16"	1600/cs
1/8"	800/cs
1/4"	400/cs
3/8"	250/cs
1/2"	200/cs

8" x 8"

Thickness	Pack
1/16"	250/cs
1/8"	150/cs
1/4"	80/cs
1/2"	40/cs

10" x 10"

Thickness	Pack
1/2"	30/cs

M = 1,000

OTHER STOCK SIZES AVAILABLE

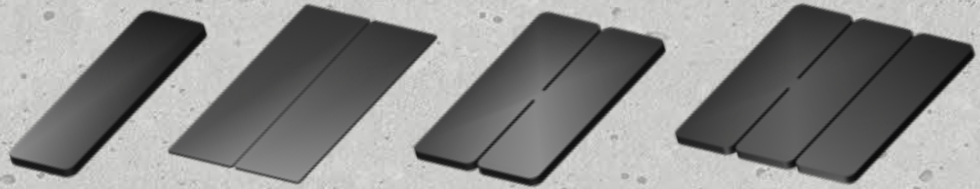
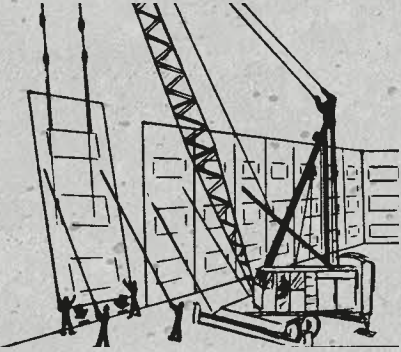
Representations shown are for recommended usages. No warranty expressed or implied is furnished. In any case, Grove Shims™ liability is limited to the purchase price of this product.

17 Marguerite Avenue, P.O. Box 240, Leominster, Massachusetts 01453
 Tel. 1-800-72-GROVE • Fax: (978) 840-4130
 Visit our Web Site: www.GroveShims.com • Email: sales@GroveShims.com



GROVE SHIMS™

RUGGED, INEXPENSIVE, AND CONVENIENT LEVELING AND ALIGNMENT AIDS FOR THE GLASS AND CONSTRUCTION INDUSTRY



Rugged 6" x 6" construction used in demanding applications including tilt up concrete, scored in 2" segments.

Thickness	Size	Pack
1/16"	2" x 6"	1600/cs
1/8"	2" x 6"	900/cs
1/4"	2" x 6"	475/cs

1/32"	4" x 6"	1000/cs
1/16"	4" x 6"	1000/cs
1/8"	4" x 6"	500/cs
1/4"	4" x 6"	250/cs
3/8"	4" x 6"	180/cs
1/2"	4" x 6"	120/cs

1/16"	6" x 6"	600/cs
1/8"	6" x 6"	350/cs
1/4"	6" x 6"	180/cs
3/8"	6" x 6"	120/cs

RIBBED SHIMS

1/16"	4" x 6"	1000/cs
1/8"	4" x 6"	500/cs
1/4"	4" x 6"	250/cs

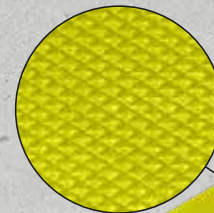
ADHESIVE SPREADER

2-1/2" x 4"	100/CS
-------------	--------

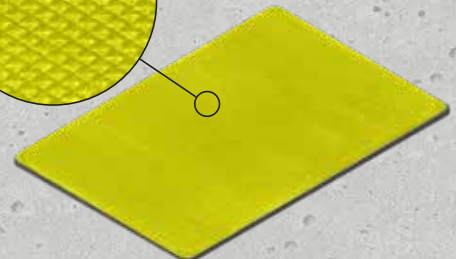


MICRO GRIDDED SHIMS

1/16"	4" x 6"	1000/cs
1/8"	4" x 6"	500/cs
1/4"	4" x 6"	250/cs
1/2"	4" x 6"	120/cs



GROVE LOCKING MICRO GRID



SHIM PACKS ARE AVAILABLE.